

# Accelerate your compute-intensive workloads flexibly and efficiently with the HPE Cray XD2000

## The exascale era comes with new requirements

Compute-intensive applications and workloads are exceeding the capacity of traditional infrastructure

Demand is rising for new modeling, simulation, analytics, and AI workflows

Enterprises need to increase performance and efficiencies with a limited budget

Massive data growth

Larger AI models

New algorithms



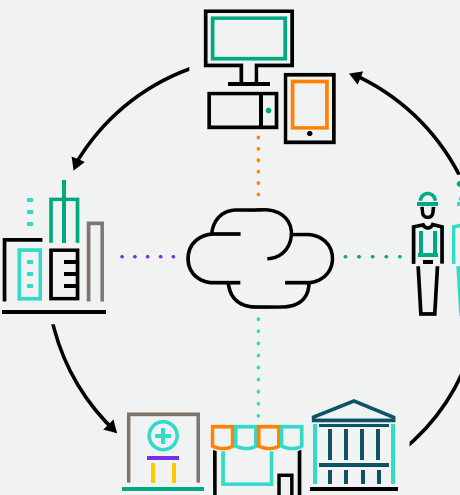
Increased performance

Higher efficiencies

Sustainability

## Fueling innovation across industries


- Predicting extreme weather events
- Accelerating oil and gas exploration
- Creating renewable clean energy futures




- Preventing fraud and increasing regulatory compliance
- Discovering lifesaving precision medicine
- Developing high-fidelity models for product development

## Supercomputing for today’s massive converged workloads and tomorrow’s new discoveries


## Supercomputing capabilities at a lower TCO



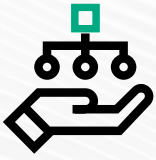
Purpose-built for supercomputing and AI workloads



Flexible scale-out building blocks

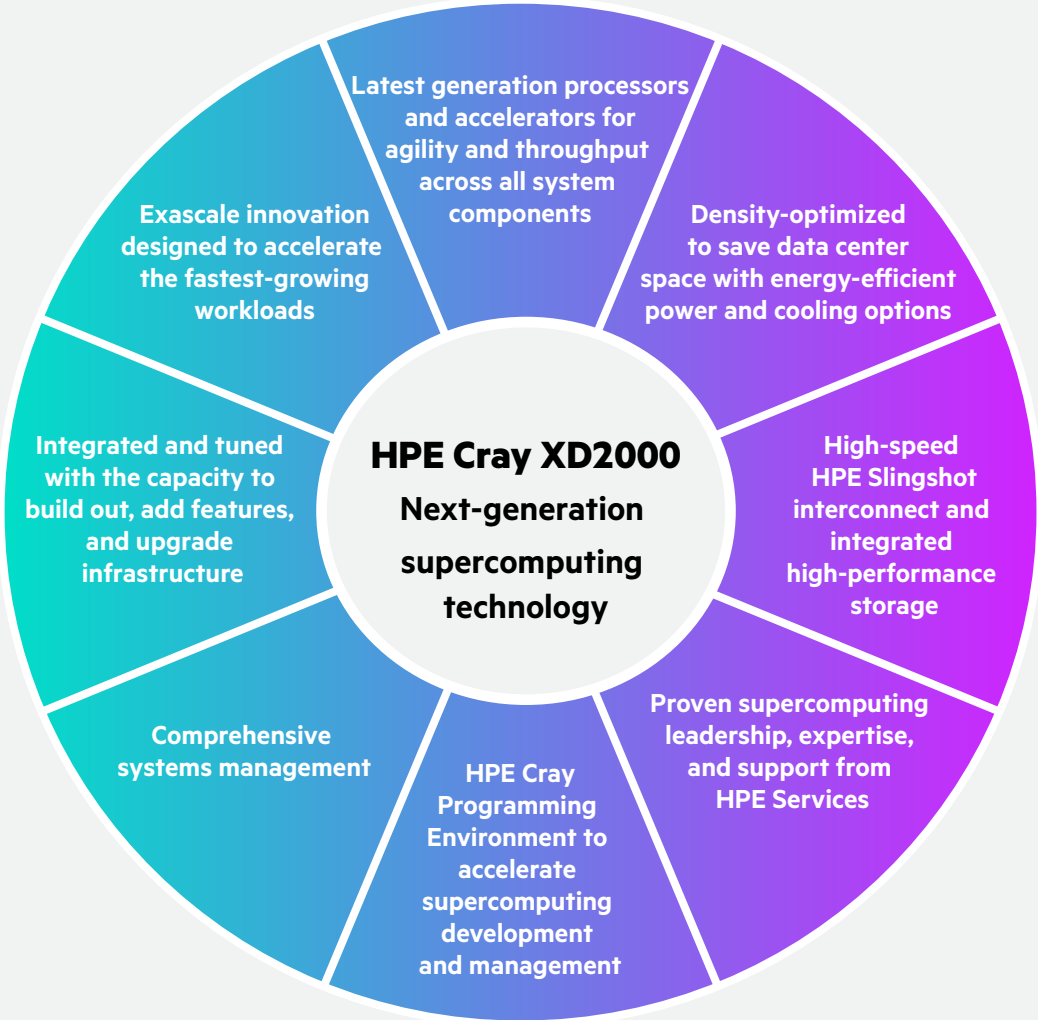


Maximum performance and lower TCO




Simplified management and advanced security

## Gaining competitive and operational advantages



Learn more at [HPE.com/us/en/HPE-Cray-XD2000.html](https://HPE.com/us/en/HPE-Cray-XD2000.html)

Visit **HPE GreenLake**

 **Chat now (sales)**